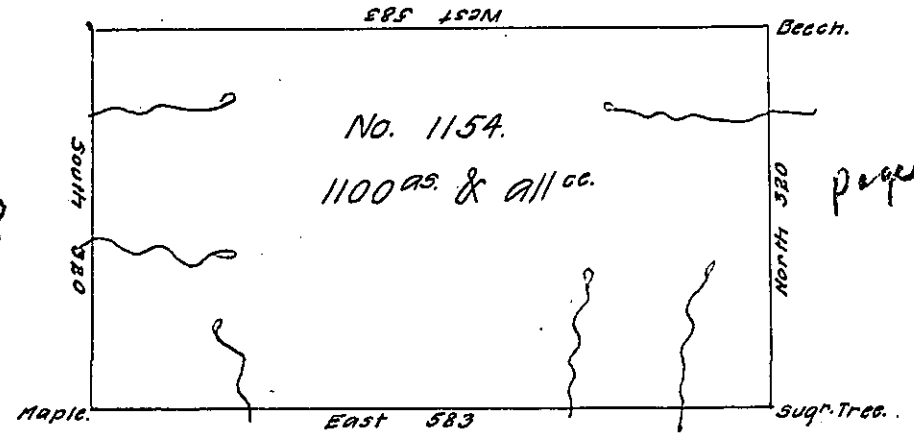


611111M 5040  
page 157

Chas. Willing  
page 158



Chas. Willing  
page 155

page 151

Chas. Willing

page 152

Situate on the Waters of Sugar Creek in the late purchase  
~~Northumberland County~~ Dist. No. 1 Surveyed 1st November  
 1792 to Charles Willing on warrant dated 21st April 1792  
 No. 1154 Containing one thousand one hundred acres and  
 allowance of six P. Cent. &c.

John Adlum Dept. Survr.

Dan<sup>l</sup>. Brodhead Esq<sup>r</sup>. S. G<sup>l</sup>.

IN TESTIMONY that the above is a copy of the original remaining on file in  
 the Department of Internal Affairs of Pennsylvania, made  
 conformably to an Act of Assembly approved the 16th day of  
 February, 1833, I have hereunto set my Hand and caused  
 the Seal of said Department to be affixed at Harrisburg,  
 this fourteenth day of July 1907.

*Henry Houck*  
 Secretary of Internal Affairs.